

## FAQ's - ECOFIT

### 1. What is ECOFIT?

ECOFIT is an organic fungicide, which effectively manages various diseases like Blast, Leaf Spot, Powdery Mildew, Early Blight, Fungal Leaf Blight etc. on Paddy, Potato, Tomato, Grapes, Mango, Pomegranate, Papaya & Vegetables.

### 2. What is the composition of ECOFIT?

Clove Oil containing Eugenol	00.10% w/v (Min.)
Silicone surfactant	02.00% w/v (Max.)
Potassium soap	97.90% v/v (Max.)
Total:	100.00%

### 3. Is this product available in powder form or liquid form?

ECOFIT is available in both powder and liquid forms.

### 4. What is the dosage of ECOFIT?

2 ml / 2 gm per litre of water.

### 5. How should I mix or apply this product?

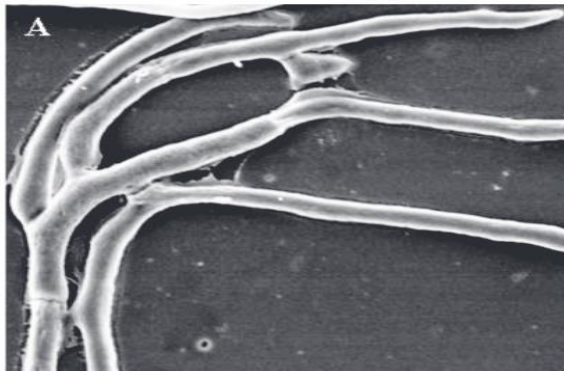
Mix the recommended quantity (2 ml per Lit. of water) thoroughly in sufficient amount of water & spray on both sides of the leaves / affected areas.

### 6. What is the application method of ECOFIT fungicide?

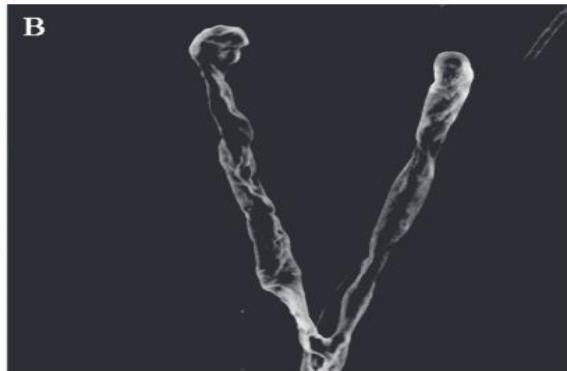
Foliar spray; As a preventive you can spray it. As it is organic input, there will not be any side effect.

### 7. What is the mode of action of ECOFIT as anti-fungal?

Eugenol results in morphological damage to exposed hyphae of the fungal organism as observed by Cytoplasmic coagulation and vesiculation on hyphae. Eugenol interferes with metabolic processes taking place after the stages of conidia germination. Another mechanism is due to membrane damage. Eugenol, being a lipophilic compound, can enter between the fatty acid chains that make up the membrane lipid bilayers, thus altering the fluidity and permeability of cell membranes resulting in subsequent destruction of the fungal cells.



Control (Without Eugenol Treatment)



Shriveled hyphae after Eugenol Treatment

**8. Does ECOFIT fungicide have any solubility issues?**

Having processed from natural ingredients and emulsified with high quality Potassium Salt of Fatty Acids (Potassium Soap), the products do not have any solubility issues. Only in case the water quality is not good – too hard water or highly alkaline water, there might be problem with complete solubility. In such cases use a surfactant like Wespa 80 at the dosage of 0.25-0.50 ml per liter of spray solution will make the solution complete solubility.

**9. Is ECOFIT fungicide registered with CIB and can you provide Principal Certificate or O Form for selling these products?**

The ingredients used in our formulation are nature-derived and not listed in the Schedule of the Insecticide Act, 1968. The actives are not listed under the schedule to the Insecticide Act and therefore, are not be registered with CIB. As a result, Principal Certificate is not provided by the State. These ingredients are listed by OMRI as organic, considering non-toxicity and biodegradability. The ingredients in our formulations have been internationally approved and recommended by various bodies propagating organic agriculture. Based on the same, our products have been approved for use in Organic Production under the NPOP norms by IMO Control.

**10. Does ECOFIT works as contact or systemic fungicide?**

Ecofit is a contact fungicide, which is used to kill the fungi or their spores by protecting the plant where the spray is deposited.

**11. When should ECOFIT be applied?**

As a preventive you can spray it. As it is organic input, there will not be any side effect.

**12. Does ECOFIT spray work in high temperatures?**

Temperatures exceeding 40°C could delay the activity of the spray. Therefore the spraying operation is always recommended to be carried out in the early morning.

**13. After spraying of ECOFIT, if it rains after two hours will the product sprayed remain on the plant or wash out?**

Post rains, any spray will have the tendency to wash out. In such conditions, it is advisable to use a high quality wetting and spreading agent (like Wespa 80) to maintain the longer contact of spray on the leaves,

**14. How long will the result of product sprayed on plants last?**

The spray will remain active for nearly a week as the ingredients are biodegradable in nature.

**15. Do ECOFIT have phytotoxic effect?**

ECOFIT is made from purely natural ingredients and the dosage at which these are recommended have no phytotoxic effect. While the recommended dosages are from 2 ml/2gm per litre of water, even at 10-12 ml/gm per litre of water ECOFIT will not exhibit any phytotoxicity.

## **16. Can ECOFIT mixed with other products before spraying?**

Compatibility of our formulations with other fungicide / agri-inputs depends on several factors like

- Alkalinity of water used for preparation of the spray
- Amount of time the “mixture” is held before spraying

While mixing of our products with following “ad-mixture” should be avoided:

- Sulphur-based, Copper-based, Zinc-based formulations
- Organism-based formulations
- Soluble fertilizers

It is always advisable to try a small sample for mixing any two formulations before farm-level application to ensure the physical stability and tolerance by plants.